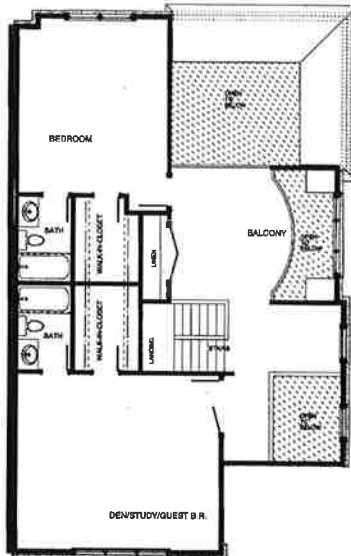




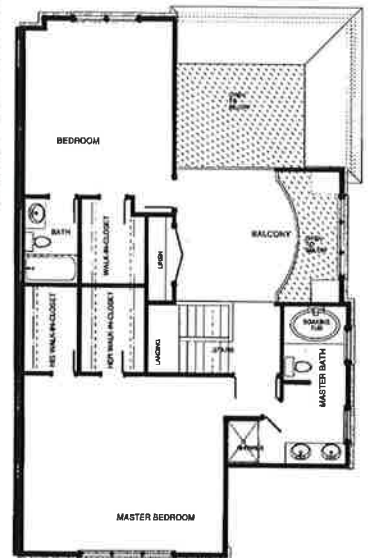
# THE MONROE



Built By:  
**Atlantic Homes LLC**

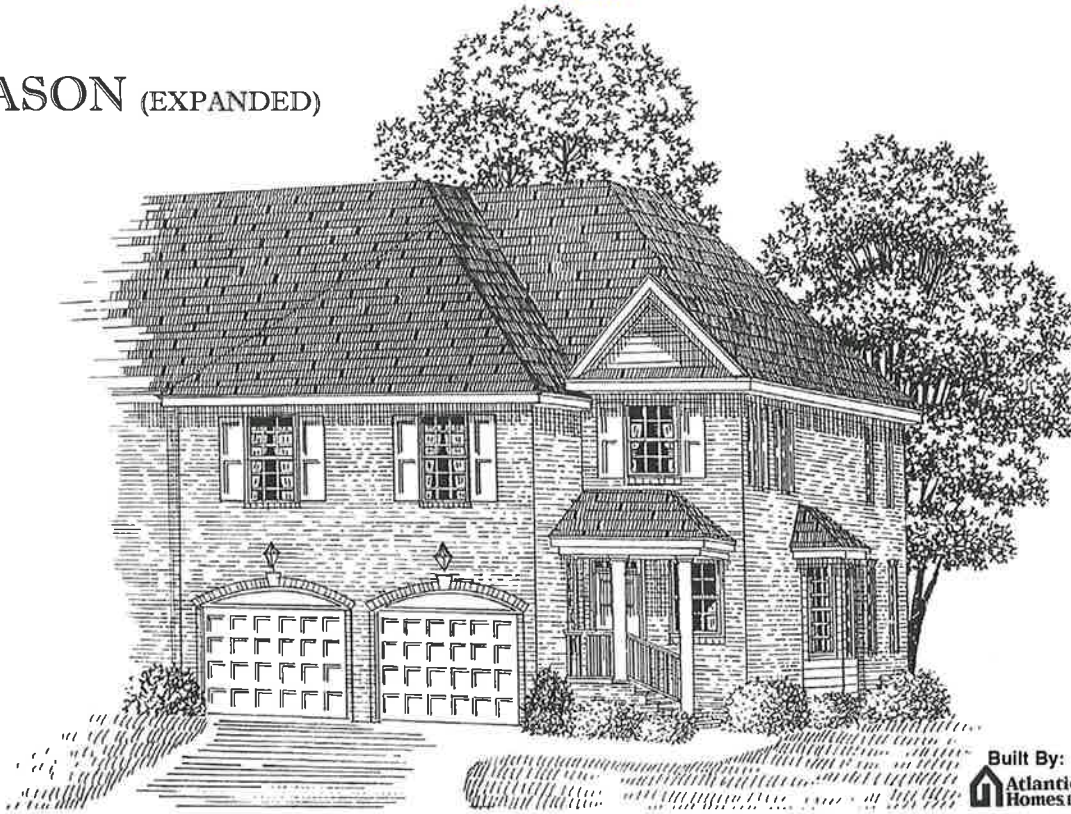


## OPTIONAL FLOORPLAN

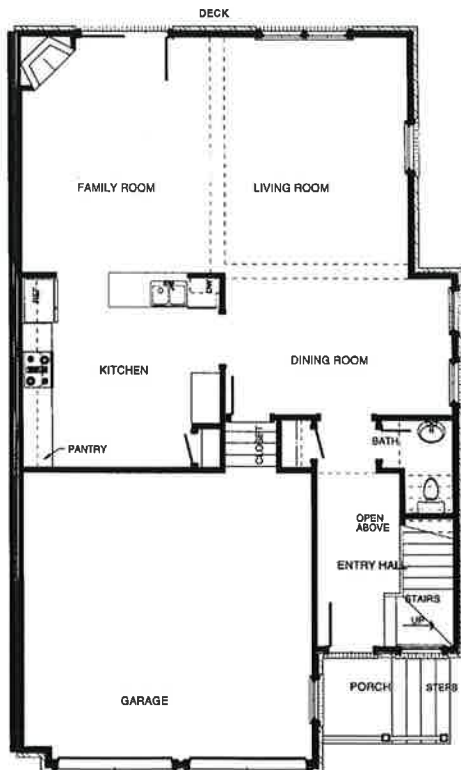




# THE MASON (EXPANDED)

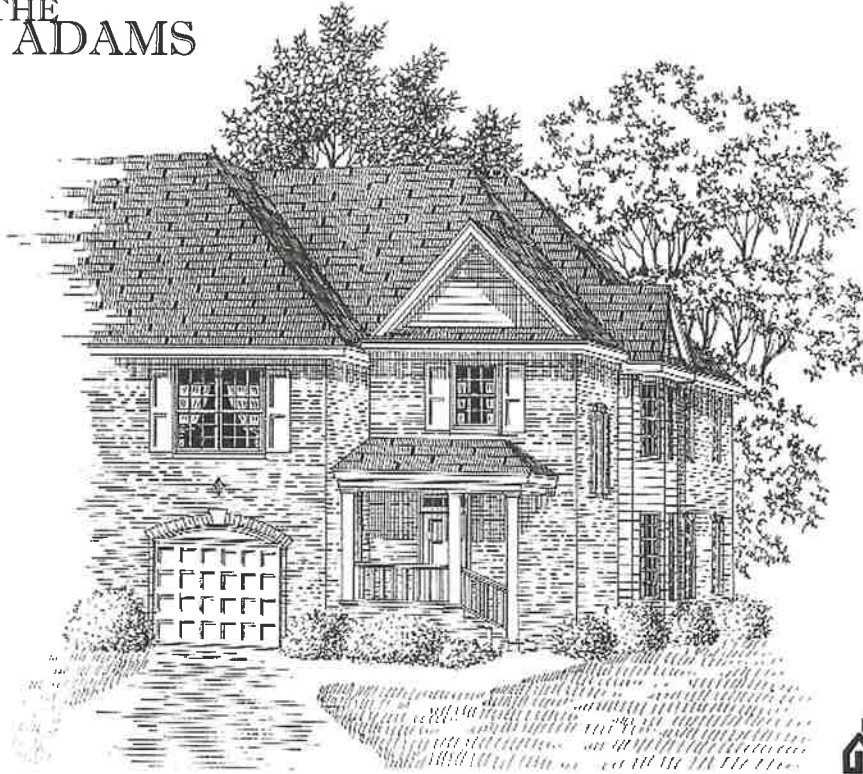


Built By:  
 Atlantic  
Homes LLC





# THE ADAMS



Built By:  
**Atlantic Homes LLC**

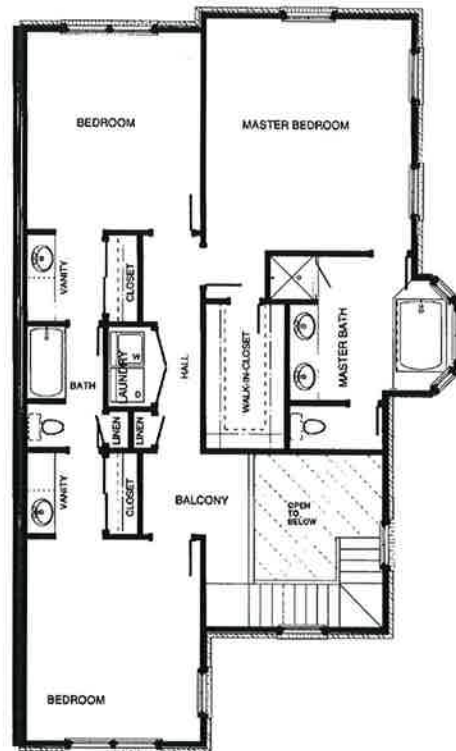
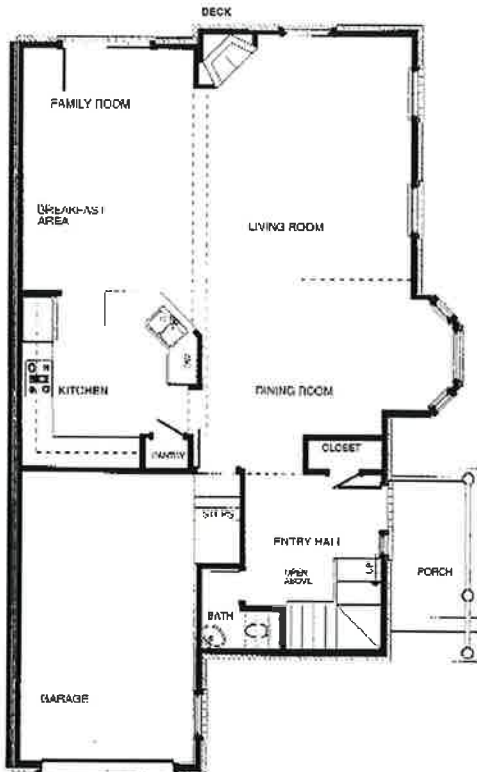




# THE BERKELEY

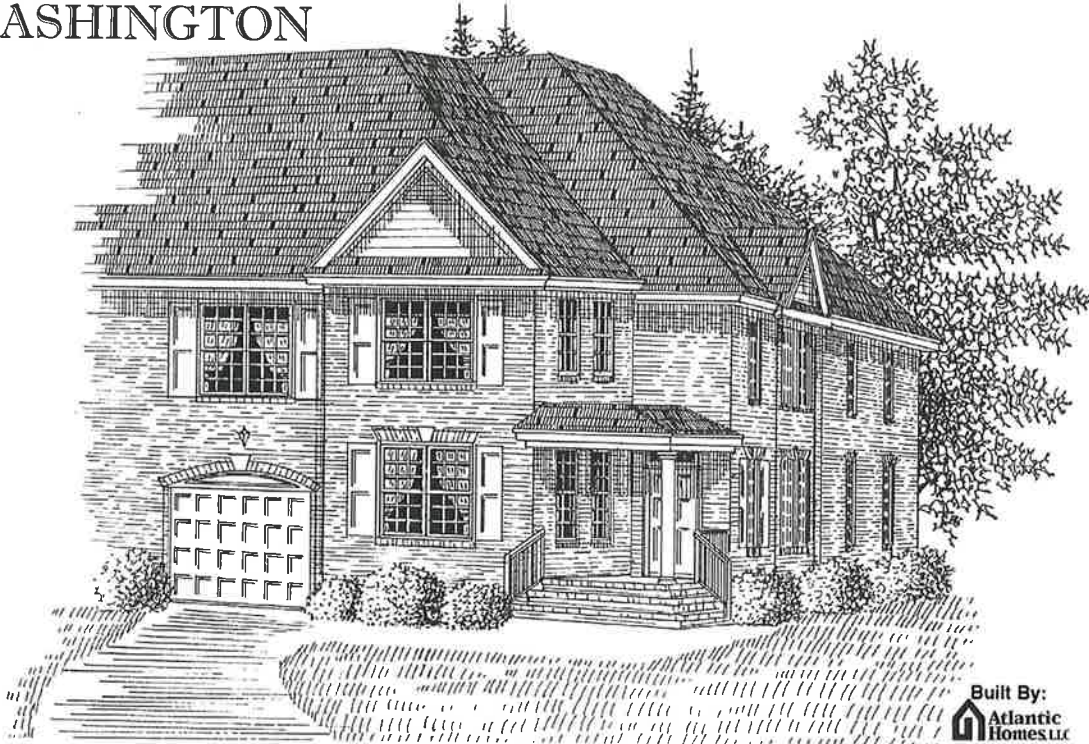


Built By:  
**Atlantic Homes LLC**

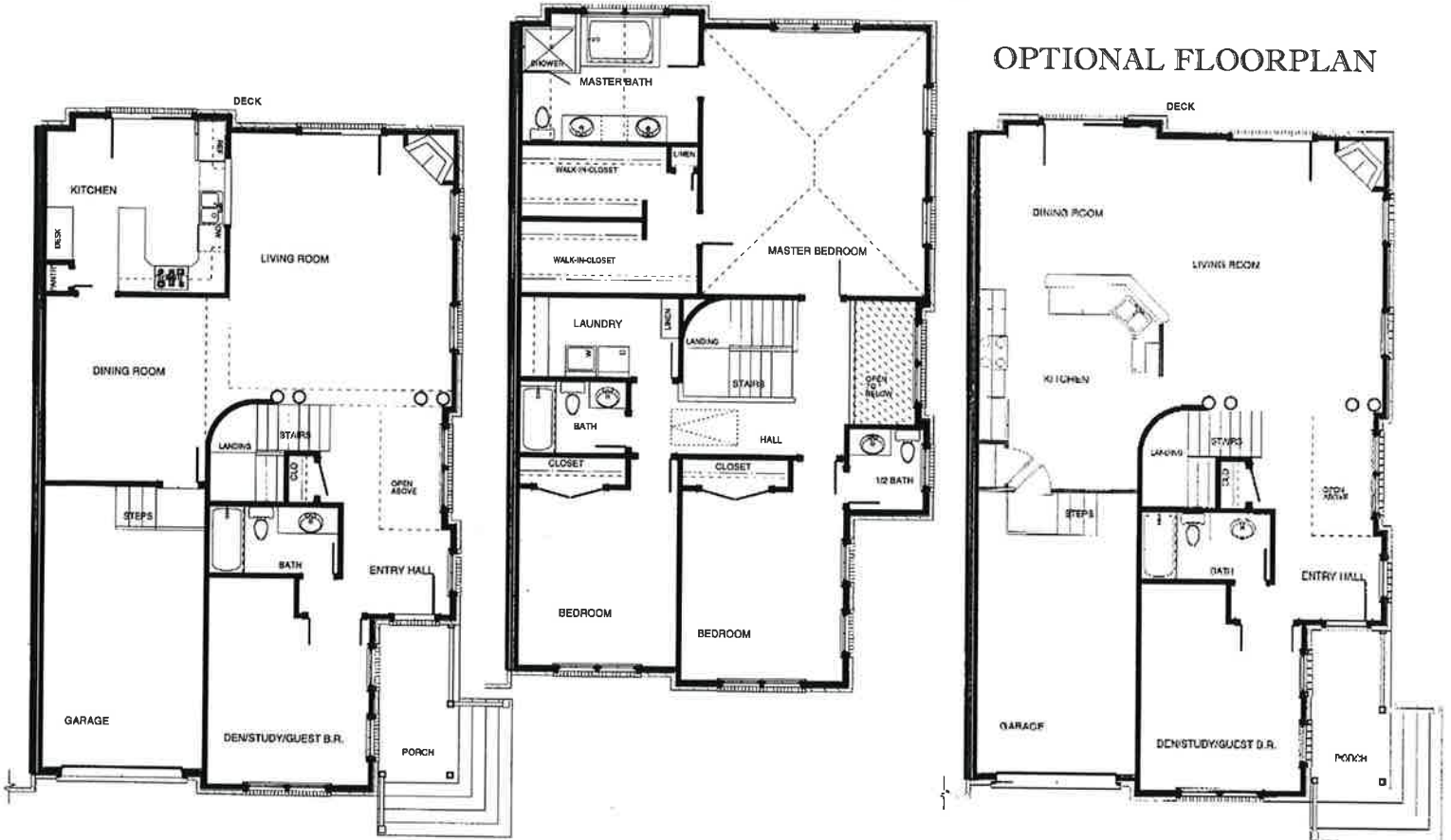




# THE WASHINGTON



Built By:  
**Atlantic Homes LLC**

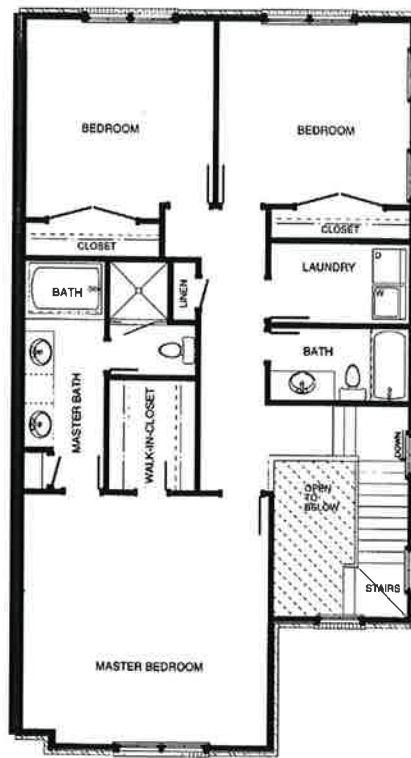




# THE MASON (STANDARD)



Built By:  
**Atlantic Homes LLC**





## STANDARD FEATURES:

### Interior

- 9' first floor ceiling height*
- Six panel interior doors with lever handles*
- Crown molding in the living/dining/kitchen areas and chair rail in dining room*
- Elongated toilets*
- Gas fireplace with logs and marble surround*
- Wood cabinets with brass pulls*
- Ceiling fans in living room and master bedroom*
- Dual zone gas heat and quick recovery gas water heater*
- Security system with one keypad*
- Deadbolt locks on all exterior doors*

### Kitchen

- Self-cleaning smooth top GE electric or gas range*
- Built-in GE microwave*
- Quiet power GE dishwasher*
- Garbage disposal*
- Icemaker hook-up*

### Floor Coverings

- Ceramic tile or hardwood entry and bathrooms*
- Vinyl flooring in kitchen and laundry*
- All other areas carpeted with upgraded 6 lb. padding*

### Exterior

- All brick siding*
- Vinyl soffits and aluminum wrapped trim*
- Aluminum gutters with baked finish*
- Low maintenance vinyl clad windows*
- Architectural shingles with 40 year warranty*
- Maintained sodded yards with irrigation system*
- Sheathing wrap to reduce air filtration*
- Garage door opener*

