

The Raven

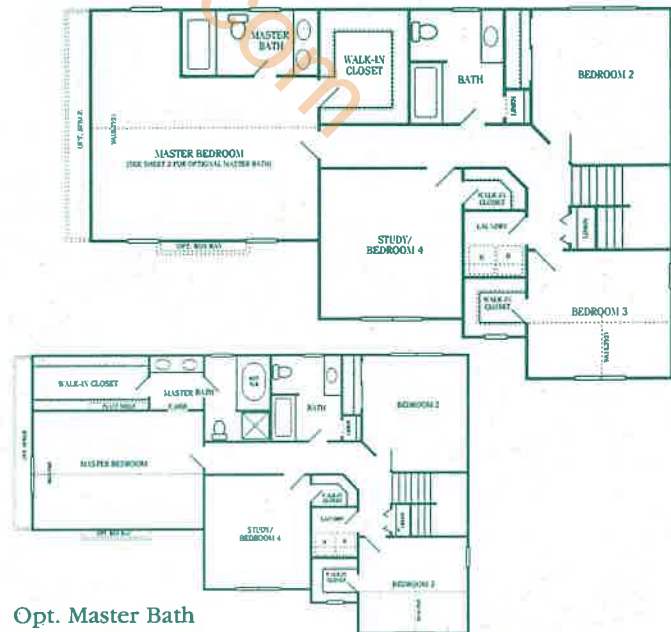
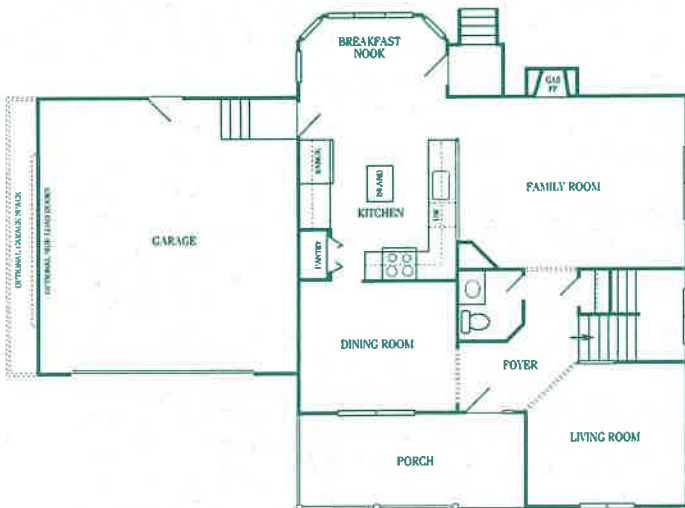


SHOWN WITH OPTIONAL
SIDE LOAD GARAGE

the Meadows



OPTIONAL BRICK FRONT



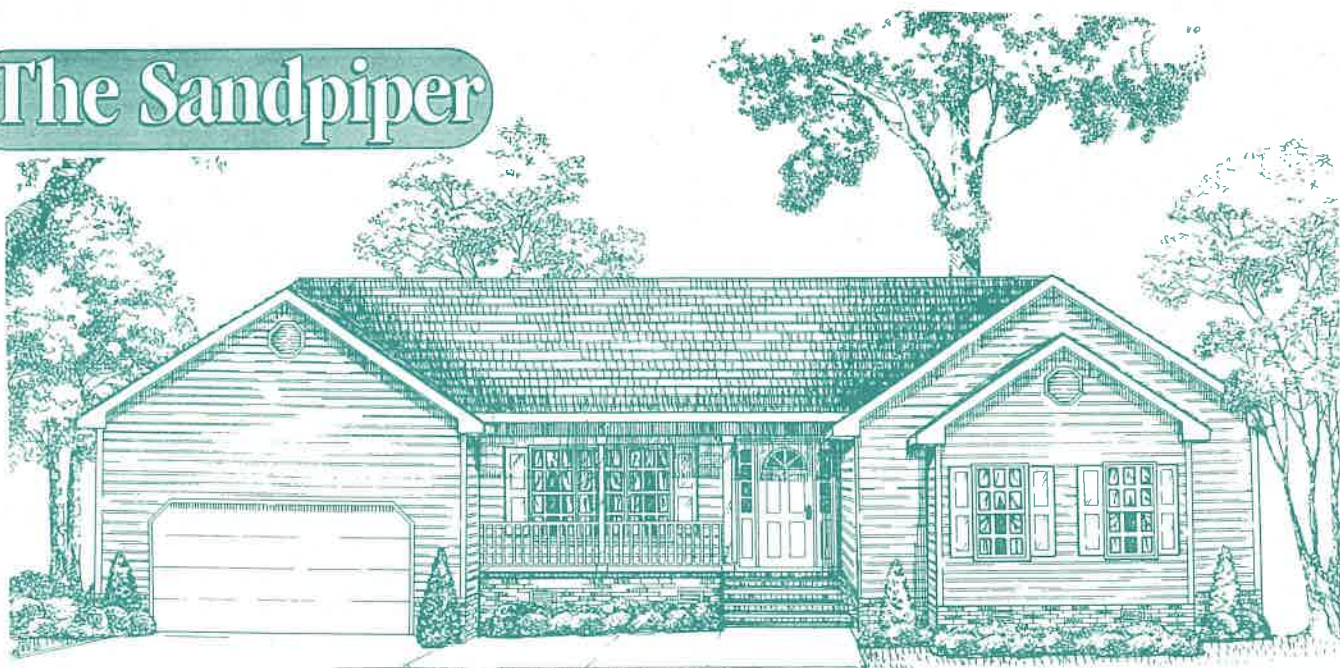
Opt. Master Bath
and Master Bedroom

All illustrations are artist's concept of preliminary design. Builder reserves the right to modify plans, prices, specifications and components and to withdraw any plan, without notice. Extra-cost features may be shown in illustrations or exhibit homes. Individual homes may vary from the plan, the exhibit home, or others of the same type, depending on field conditions.

Artist's concept of preliminary design



The Sandpiper



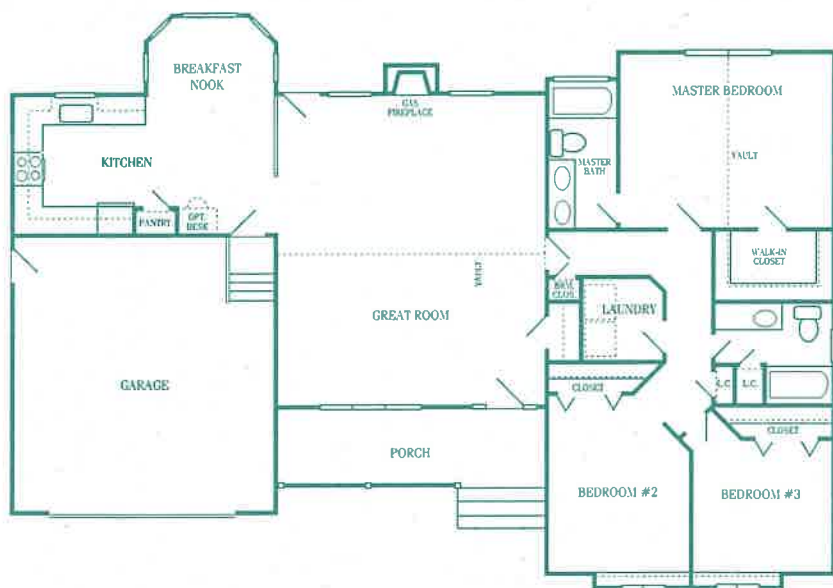
Artist's concept of preliminary design



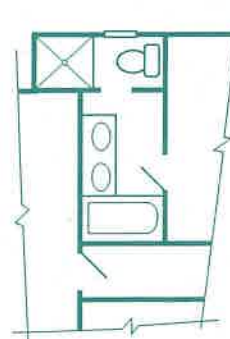
the Meadows



OPTIONAL BRICK FRONT



PARTIAL PLAN
MASTER BATH
W/OPTIONAL
GARDEN TUB



PARTIAL PLAN- MASTER BATH
W/OPTIONAL SHOWER

All illustrations are artist's concept of preliminary design. Builder reserves the right to modify plans, prices, specifications and components and to withdraw any plan, without notice. Extra-cost features may be shown in illustrations or exhibit homes. Individual homes may vary from the plan, the exhibit home, or others of the same type, depending on field conditions.



The Wren

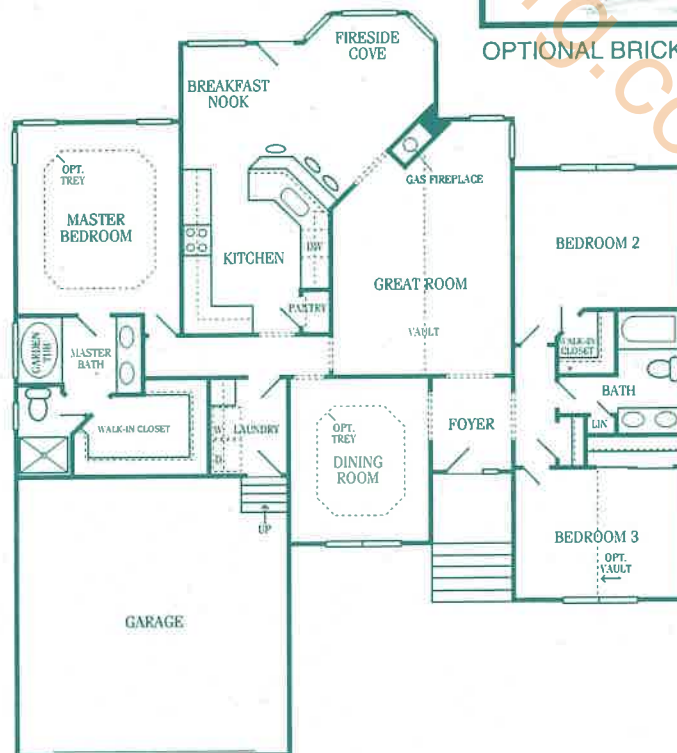


Artist's concept of preliminary design

the Meadows



OPTIONAL BRICK FRONT



All illustrations are artist's concept of preliminary design. Builder reserves the right to modify plans, prices, specifications and components and to withdraw any plan, without notice. Extra-cost features may be shown in illustrations or exhibit homes. Individual homes may vary from the plan, the exhibit home, or others of the same type, depending on field conditions.



The Finch



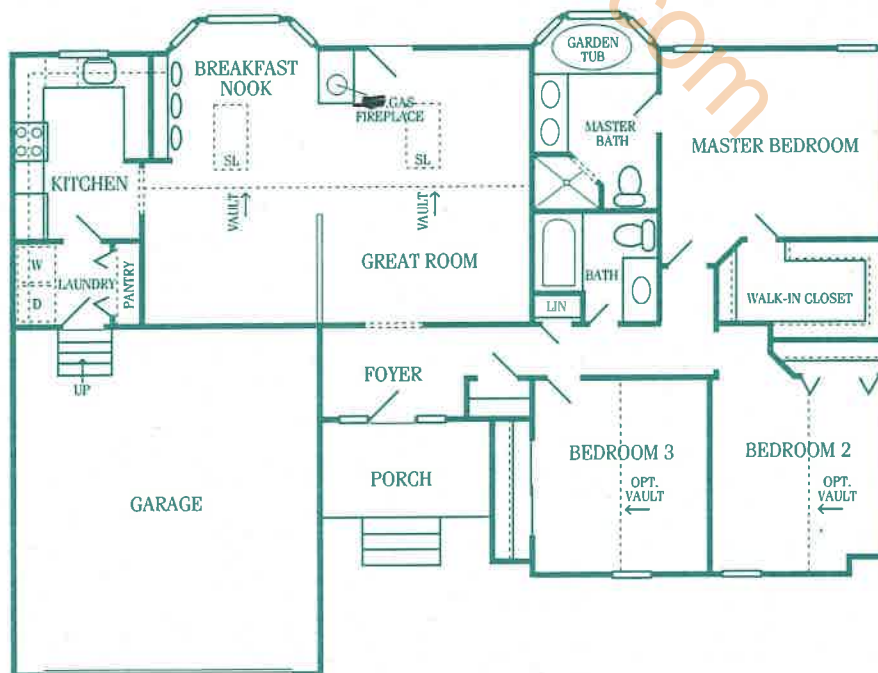
Artist's concept of preliminary design



the Meadows



OPTIONAL BRICK FRONT



All illustrations are artist's concept of preliminary design. Builder reserves the right to modify plans, prices, specifications and components and to withdraw any plan, without notice. Extra-cost features may be shown in illustrations or exhibit homes. Individual homes may vary from the plan, the exhibit home, or others of the same type, depending on field conditions.



The Dove

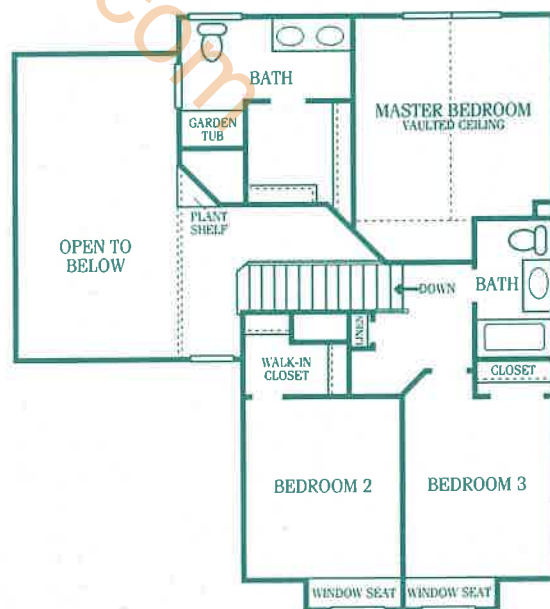
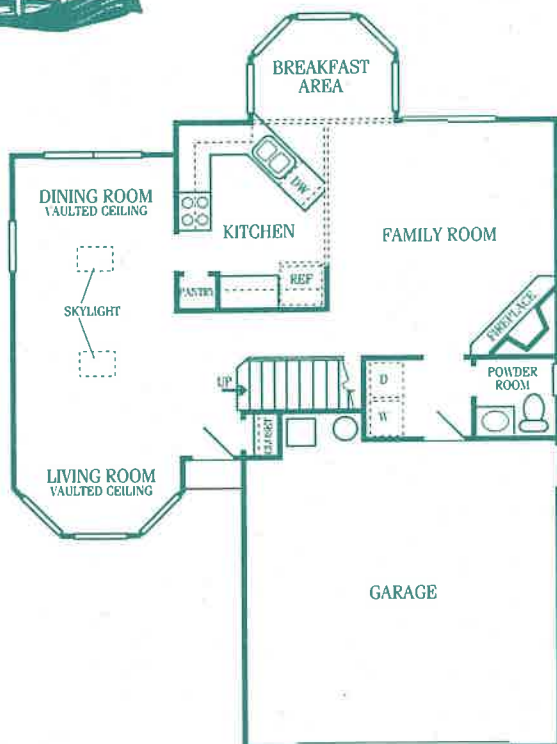


the Meadows



OPTIONAL BRICK FRONT

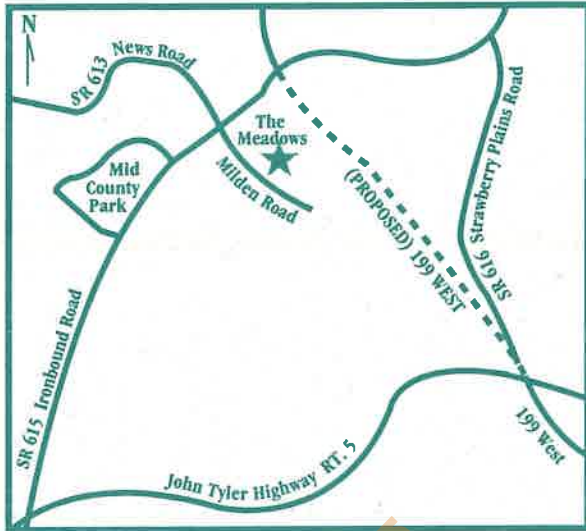
Artist's concept of preliminary design



All illustrations are artist's concept of preliminary design. Builder reserves the right to modify plans, prices, specifications and components and to withdraw any plan, without notice. Extra-cost features may be shown in illustrations or exhibit homes. Individual homes may vary from the plan, the exhibit home, or others of the same type, depending on field conditions.



Conveniently located from the meadows are:



Directions: From I-64 take 199 West to Strawberry Plains Road. to left on Ironbound Road. (SR. 615). Then take a left on Milden Road at the entrance to The Meadows.

Places of Interest

Williamsburg Crossing shopping Center	2mi
Williamsburg Community Hospital	3mi
Colony Square Shopping Center	3mi
Colonial Williamsburg -Duke of Gloucester Street	4.5 mi
Jamestown Settlement	5mi
Williamsburg Airport	6.5 mi
Water Country	8mi
Williamsburg Pottery	8.5mi
Busch Gardens	8.5mi
Carters Grove Plantation	10mi

Schools

Clana Byrd Barker Elementary (K-5)	2.5mi
James Blair Middle School (6,7,8)	3.5mi
Lafayette High School	5mi
Jamestown High School (new in 1997)	4.5mi
College of William & Mary	5mi

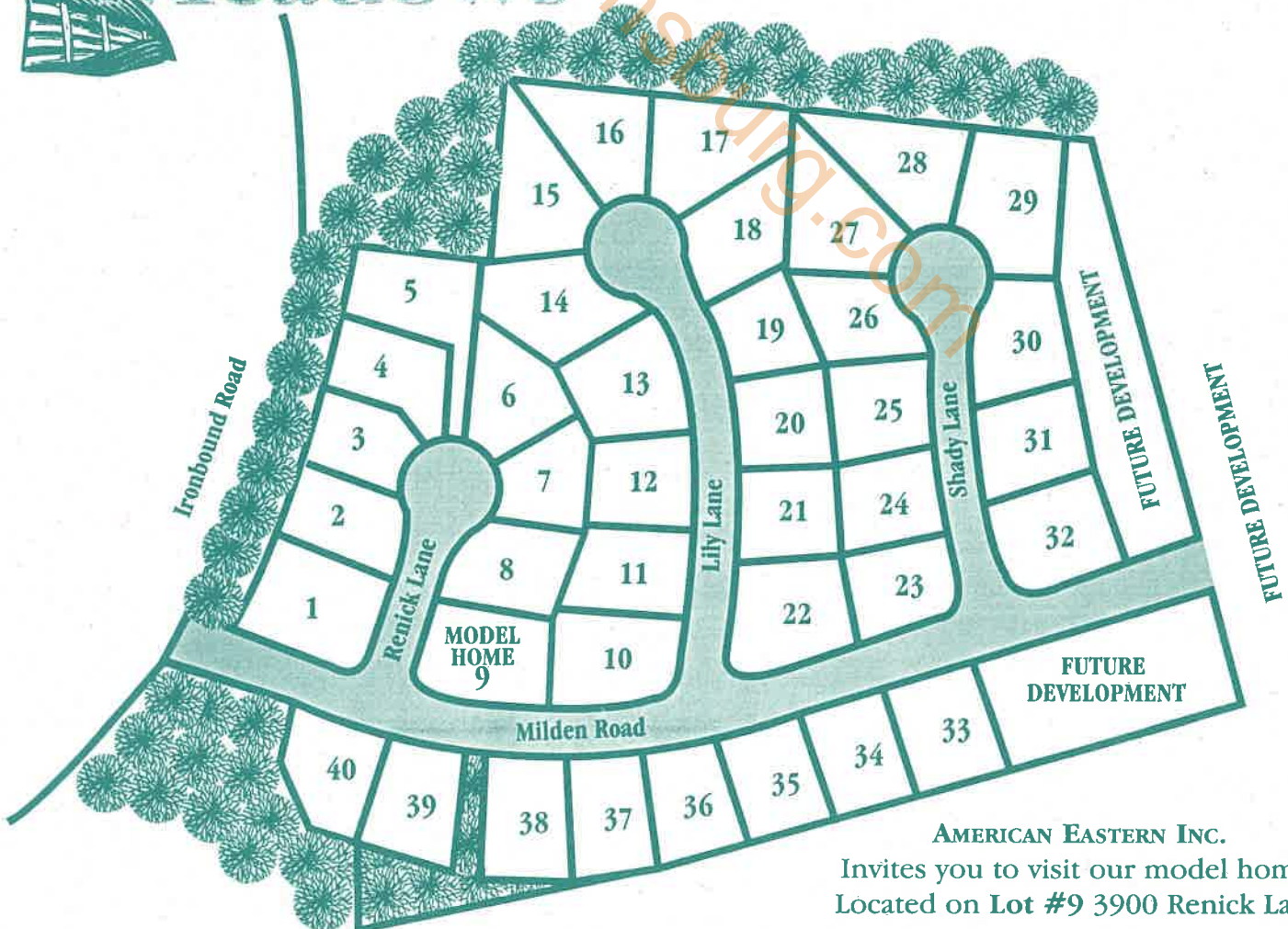
Military Installations

Camp Perry - (U.S.N. Supply Center)	9mi
U. S. Naval Weapons Station	13.5mi
Ft. Eustis	18.5mi

(note: all distances are estimated, actual mileage may vary)



the Meadows



AMERICAN EASTERN INC.

Invites you to visit our model home.
Located on Lot #9 3900 Renick Lane