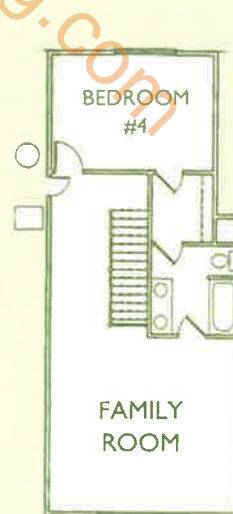
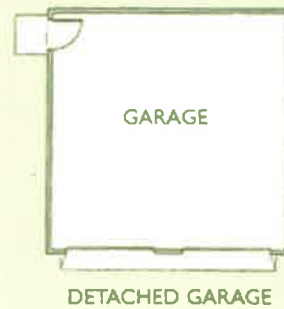
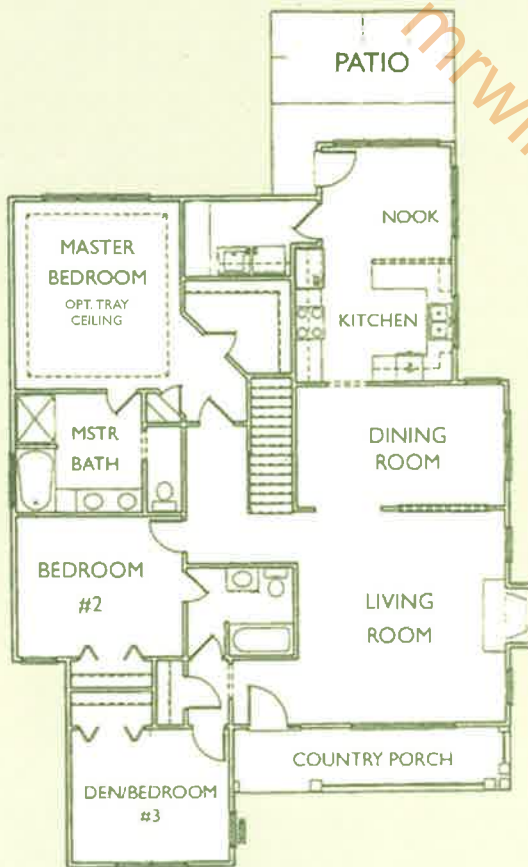


The Adams



STANDARD FINISHED
SECOND FLOOR PLAN



ALTERNATE FINISHED
SECOND FLOOR PLAN

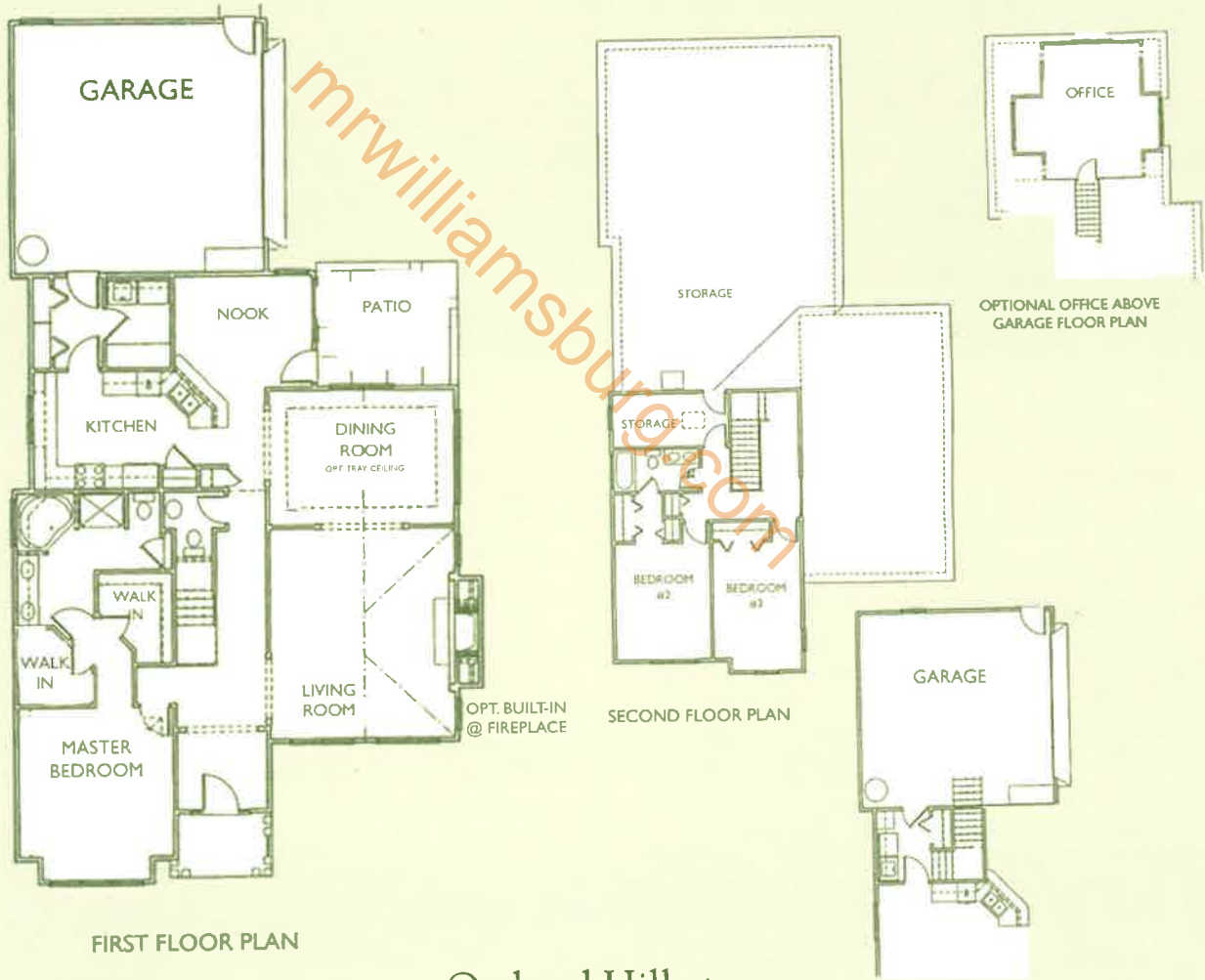
Orchard Hill at
STONEHOUSE
dedicated to excellence, dedicated to you

All illustrations are artist representations and may contain special features. Details and dimensions of individual homes may vary from plans.



ATLANTIC HOMES, LLC

The Lafayette



Orchard Hill at

STONEHOUSE
dedicated to excellence, dedicated to you



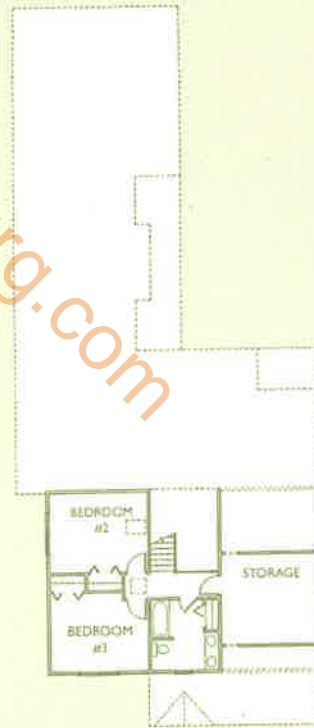
ATLANTIC HOMES, LLC

All illustrations are artist representations and may contain special features. Details and dimensions of individual homes may vary from plans.

The Washington



FIRST FLOOR PLAN



SECOND FLOOR PLAN

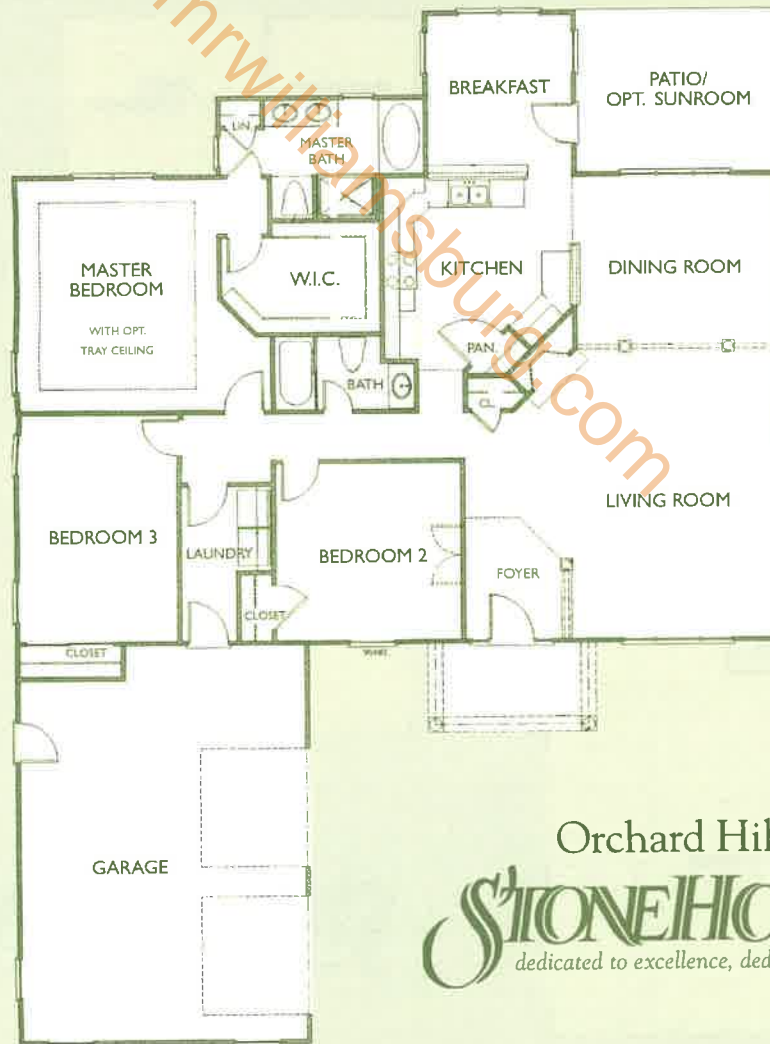
Orchard Hill at

STONEHOUSE
dedicated to excellence, dedicated to you



All illustrations are artist representations and may contain special features. Details and dimensions of individual homes may vary from plans. ATLANTIC HOMES, LLC

The Jefferson "A"

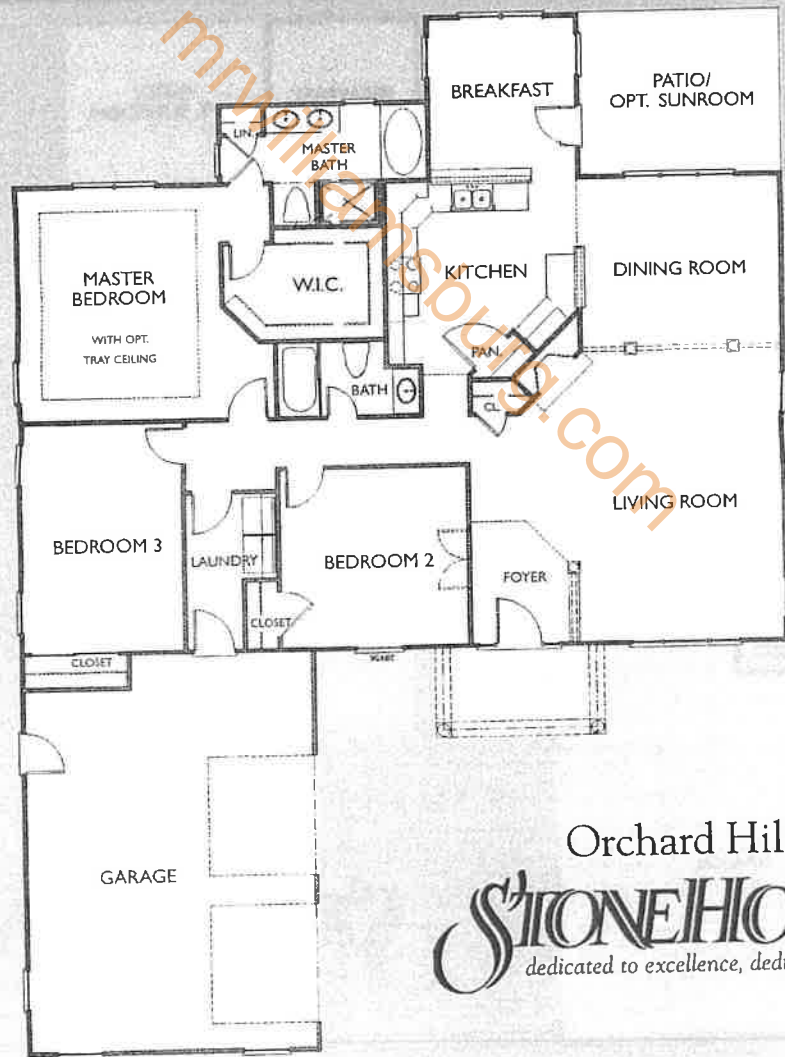


Orchard Hill at
STONEHOUSE
dedicated to excellence, dedicated to you

All illustrations are artist representations and may contain special features. Details and dimensions of individual homes may vary from plans.


ATLANTIC HOMES, LLC

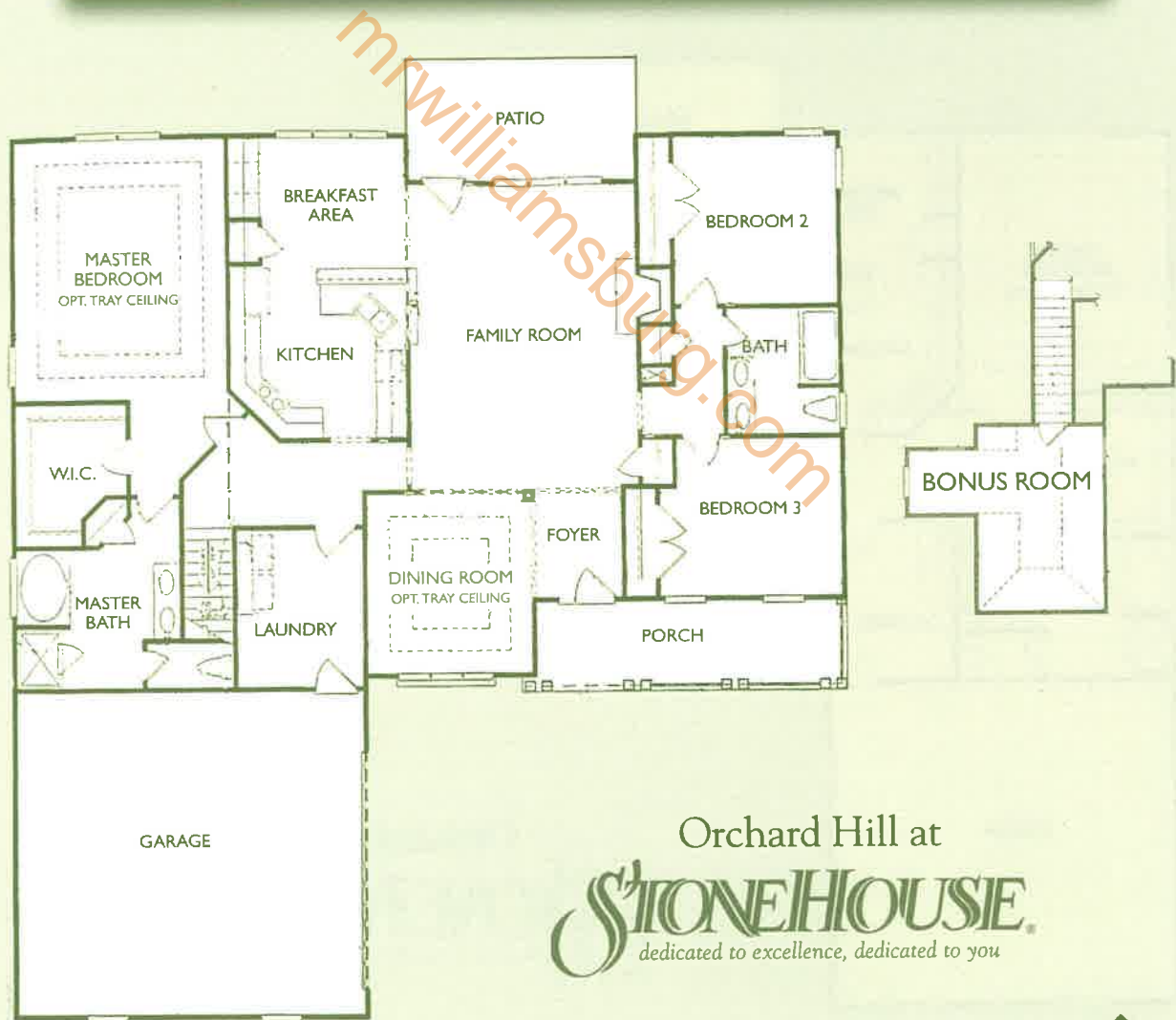
The Jefferson "B"



Orchard Hill at
STONEHOUSE
dedicated to excellence, dedicated to you

All illustrations are artist representations and may contain special features. Details and dimensions of individual homes may vary from plans.

The Marquette "A"



Orchard Hill at

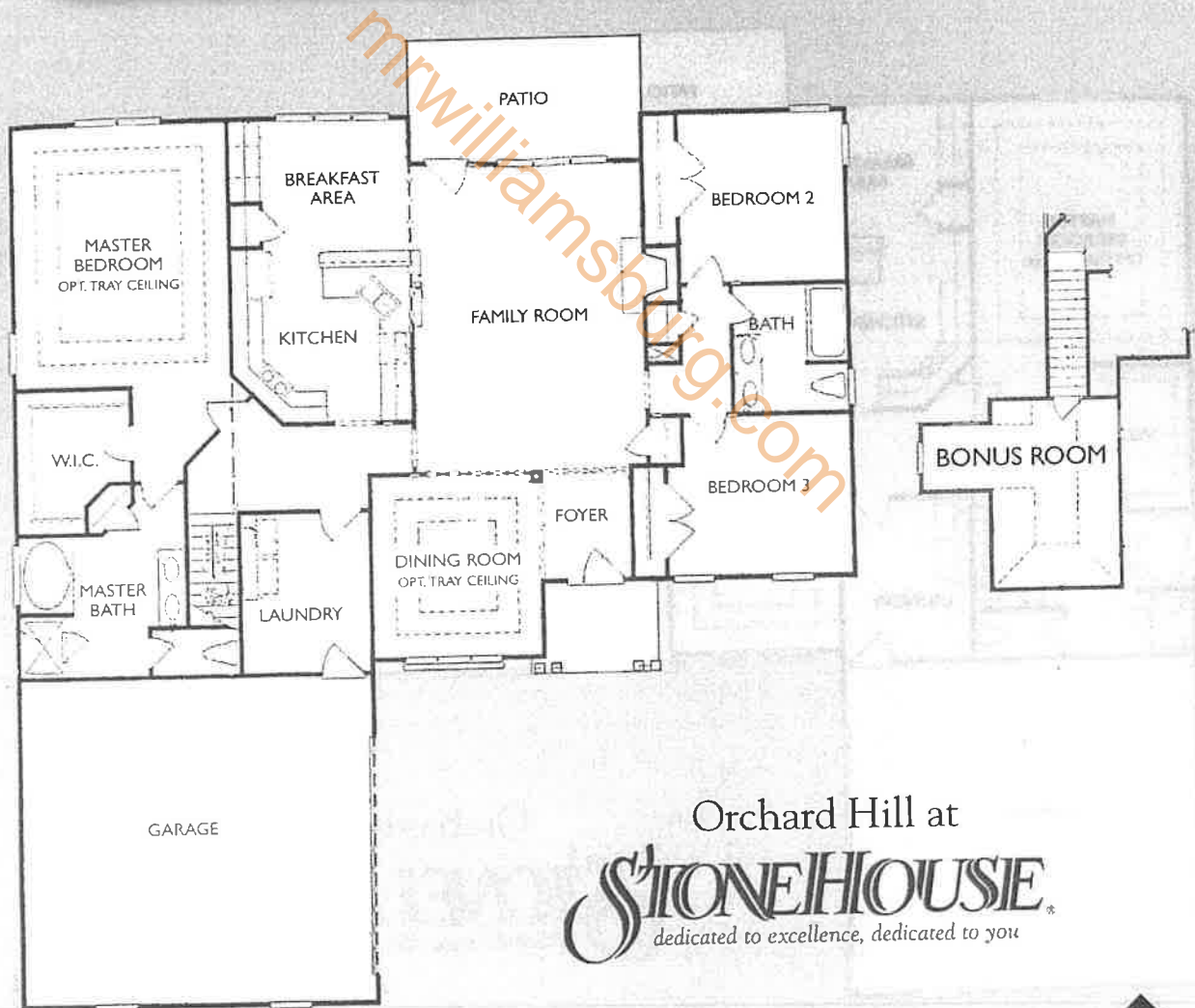
STONEHOUSE
dedicated to excellence, dedicated to you

All illustrations are artist representations and may contain special features. Details and dimensions of individual homes may vary from plans.



ATLANTIC HOMES, LLC

The Marquette "B"

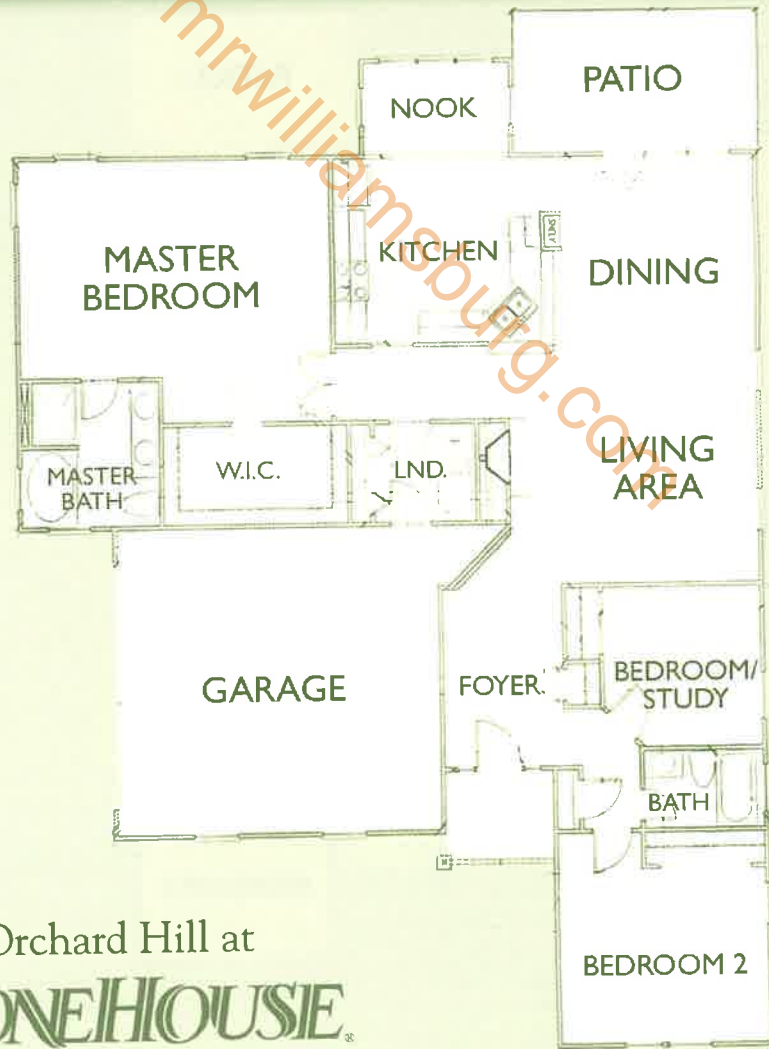


Orchard Hill at
STONEHOUSE
dedicated to excellence, dedicated to you

All illustrations are artist representations and may contain special features. Details and dimensions of individual homes may vary from plans.


ATLANTIC HOMES, LLC

The Revere "A"

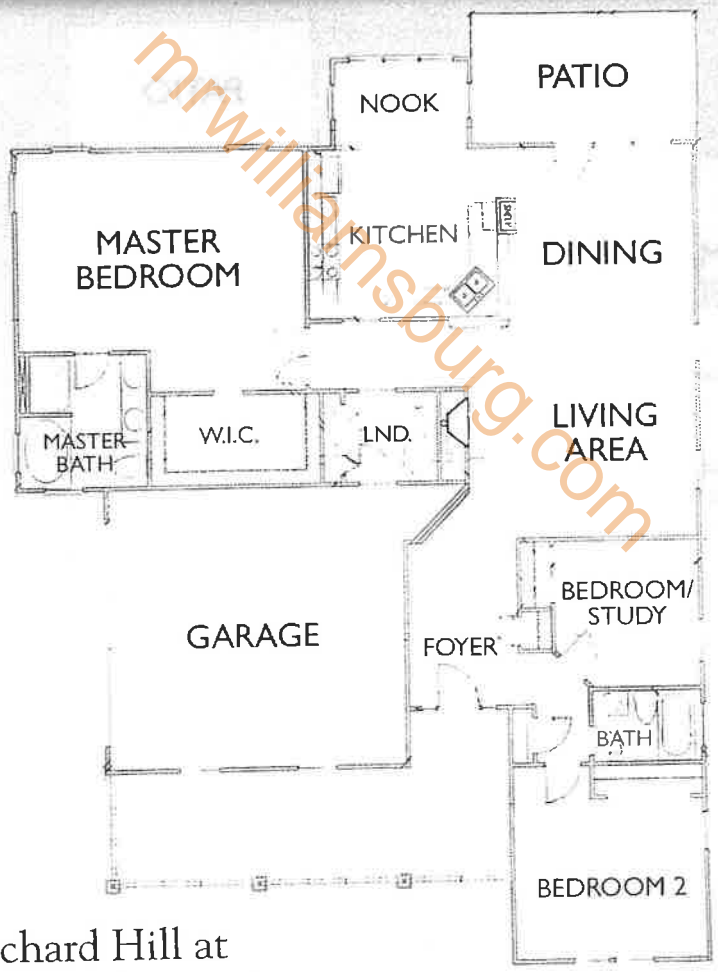
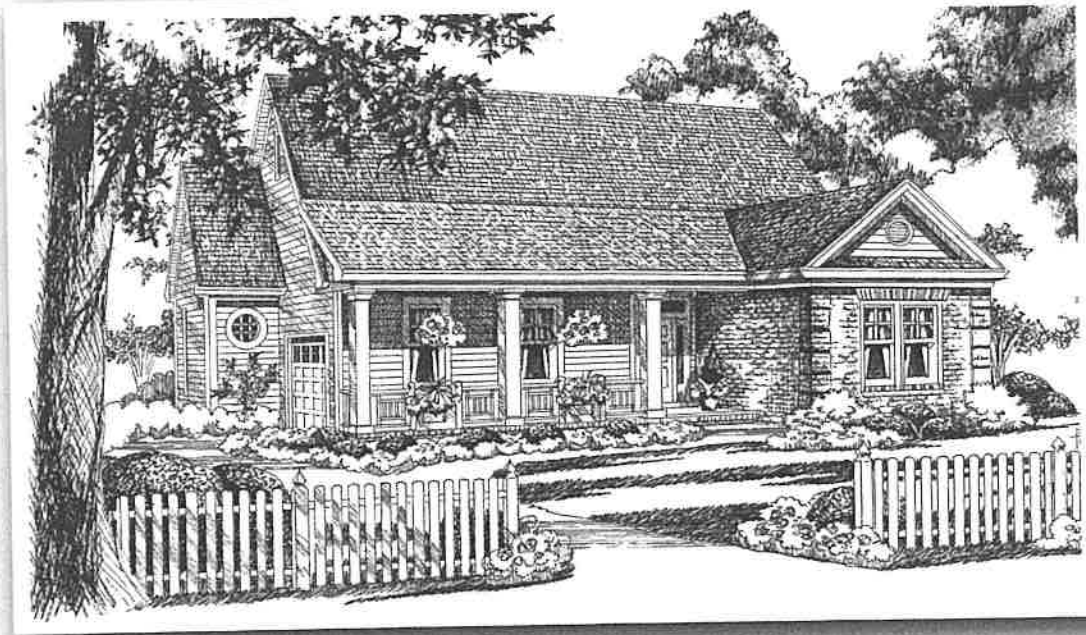


Orchard Hill at
STONEHOUSE
dedicated to excellence, dedicated to you

All illustrations are artist representations and may contain special features. Details and dimensions of individual homes may vary from plans.


ATLANTIC HOMES, LLC

The Revere "B"

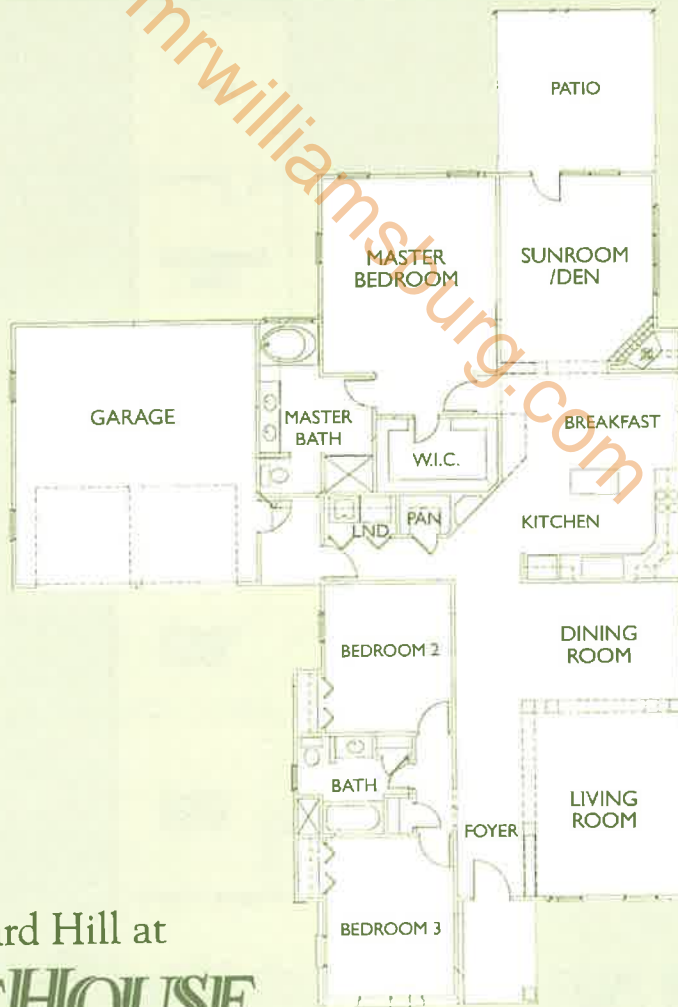


Orchard Hill at
STONEHOUSE
dedicated to excellence, dedicated to you

All illustrations are artist representations and may contain special features. Details and dimensions of individual homes may vary from plans.


ATLANTIC HOMES, LLC

The Dupree "A"



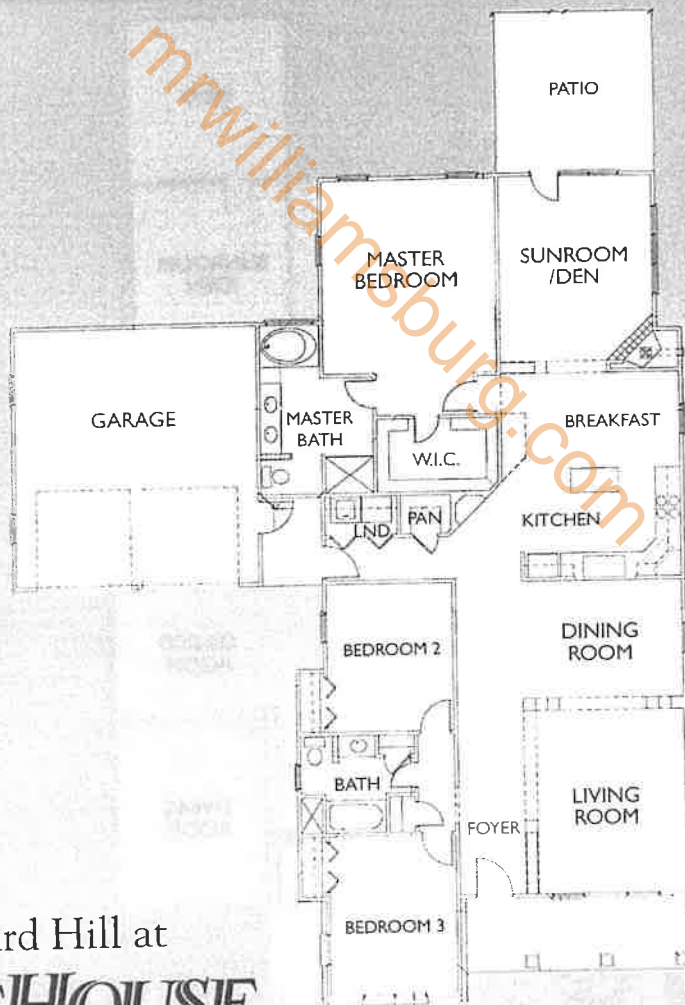
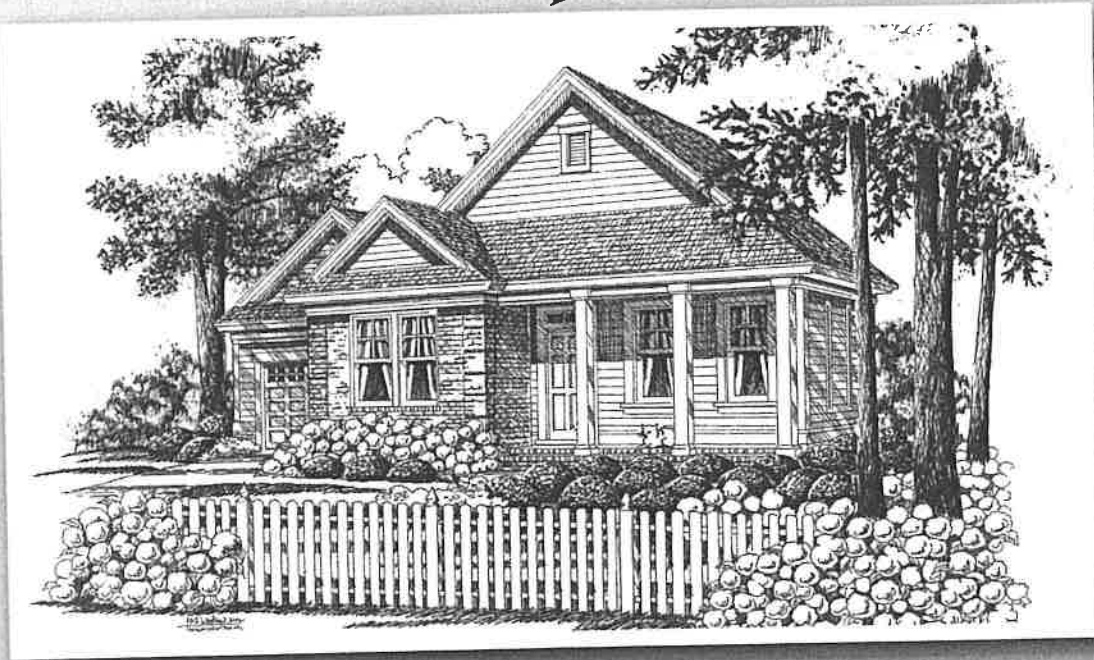
Orchard Hill at
STONEHOUSE
dedicated to excellence, dedicated to you

All illustrations are artist representations and may contain special features. Details and dimensions of individual homes may vary from plans.



ATLANTIC HOMES, LLC

The Dupree "B"



Orchard Hill at
STONEHOUSE
dedicated to excellence, dedicated to you

All illustrations are artist representations and may contain special features. Details and dimensions of individual homes may vary from plans.


ATLANTIC HOMES, LLC

Orchard Hill at



Quality Details

Community

- Independent villages promoting community variety
- Underground utilities
- Relax at the Residents' Club or Mill Pond Park
- Stay active with the swimming pool, tennis courts, golf course, fitness center and the trails around Mill Pond Park
- Enjoy the beautiful woods, water features, and open meadows

Construction

- Energy efficient homes
- Concrete floors with fiberglass mesh reinforcement
- Vinyl floors reinforced with mildew resistant adhesive
- Homes are pre-wired for cable TV, telephone outlets and ceiling fans
- Garage doors equipped with openers

Baths

- Cultured marble tops
- Ceramic floor at Master Bath
- No wax vinyl at guest baths
- Showers feature anti-scald device
- Exhaust Fans in all bathrooms
- Master bath has soaking tub
- Louvered medicine cabinets in full baths

Kitchen

- 42" raised panel oak cabinets
- Choice of Wilsonart countertops
- Stainless steel double bowl sink
- Pull out sprayer type faucet
- Energy saver dishwasher with garbage disposal
- G.E. self cleaning range
- Built-in microwave oven

Exterior

- Double hung vinyl tilt in windows
- Fully landscaped and sodded yard maintained with irrigation system
- Mailboxes at street
- Outdoor lighting for added protection
- Concrete sidewalks
- Front porches with columns
- Architectural fiberglass 30 year roof shingles
- Dutch-lap vinyl siding
- Brass entry lock & kick-plate at front door
- Steel insulated doors
- Wood cornice wrapped with baked-on maintenance free enamel coated aluminum, never needs painting
- Concrete patios as per floor plan
- Electric exterior outlets
- Hose Bibs

Interior

- Crown molding and chair rail
- Gas log vented fireplace
- Gas heat & gas water heater
- Soil resistant carpeting
- Hardwood flooring at entry
- Elite raised panel doors with levered handles
- Smoke detectors
- Washer and dryer hook-ups at laundry room



Atlantic
Homes, LLC





Orchard Hill at

STONEHOUSE
dedicated to excellence, dedicated to you